

**M&H SUNG VINA LIMITED COMPANY**

NO 24/271 TRAN NGUYEN HAN STREET, NGHIA XA WARD, LE CHAN DISTRICT, HAI PHONG CITY, VIET NAM.

The following sample was submitted and identified on behalf of the client as below:

SGS Job No. : VNHL2303005053EE  
Sample Description : "XOP EVA CHONG TINH DIEN"  
Characteristic : "XOP DEN"  
Color : "DEN"

The above sample(s) and information were provided by the client.

Sample Receiving Date : MARCH 03, 2023  
Final confirmed Date : MARCH 03, 2023  
Testing Period : MARCH 03, 2023 TO MARCH 10, 2023  
Test Requested : SELECTED TEST(S) AS REQUESTED BY THE CLIENT.  
Test method(s) : PLEASE REFER TO NEXT PAGE(S).  
Test result(s) : PLEASE REFER TO NEXT PAGE(S).  
Result Summary :

Test Requested	Conclusion
<b>RoHS Directive 2011/65/EU Annex II [amended by Directive (EU) 2015/863]</b> (Cadmium, Lead, Mercury, Hexavalent chromium, Polybrominated biphenyls (PBBs), Polybrominated diphenyl ethers (PBDEs) and Phthalates such as Bis(2-ethylhexyl) phthalate (DEHP), Butyl benzyl phthalate (BBP), Dibutyl phthalate (DBP) and Diisobutyl phthalate (DIBP))	Comply

Signed for and on behalf of  
**SGS Vietnam LTD**

**Ton Thien Thuy Hang**  
Connectivity SBU Manager

*This document is issued by the Company subject to its General Conditions of Service printed overleaf, available on request or accessible at <http://www.sgs.com/en/Terms-and-Conditions.aspx> and, for electronic format documents, subject to Terms and Conditions for Electronic Documents at <http://www.sgs.com/en/Terms-and-Conditions/Terms-e-Document.aspx>.*

*Attention is drawn to the limitations of liability, indemnification and jurisdiction issues defined therein. Any holder of this document is advised that information contained hereon reflects the Company's findings at the time of its intervention only and within the limits of Client's instructions, if any. The Company's sole responsibility is to its Client and this document does not exonerate parties to a transaction from exercising all their rights and obligations under the transaction documents. This document cannot be reproduced except in full, without prior written approval of the Company. Any unauthorized alteration, forgery or falsification of the content or appearance of this document is unlawful and offenders may be prosecuted to the fullest extent of the law.*

*Unless otherwise stated the results shown in this test report refer only to the sample(s) tested and such sample(s) are retained for 90 days only.*

# Test Report

No. VNHL2303005053EE

Date: March 10, 2023

Page 2 of 7

**Test results:**

**Sample Description:**

Component No.	Description	Material	Color
1	BLACK FOAM (XOP EVA CHONG TINH DIEN)	FOAM	BLACK

**RoHS Directive 2011/65/EU Annex II [amended by Directive (EU) 2015/863]**

Test Item(s):	Unit	Test Method	Results	RL	Limit	
			1			
Cadmium (Cd)	mg/kg	With reference to IEC 62321-5:2013 (Determination of Cd by ICP-OES)	ND	2	100	
Lead (Pb)	mg/kg	With reference to IEC 62321-5:2013 (Determination of Pb by ICP-OES)	ND	2	1000	
Mercury (Hg)	mg/kg	With reference to IEC 62321-4:2013 + A1:2017 (Determination of Hg by ICP-OES)	ND	2	1000	
Hexavalent Chromium (CrVI)	mg/kg	With reference to IEC 62321-7-2:2017 (Determination of CrVI by UV-VIS)	ND	8	1000	
<b>Sum of PBBs</b>	mg/kg	With reference to IEC 62321-6:2015 (Determination of PBB by GC-MS)	ND	-	1000	
Monobromobiphenyl	mg/kg		ND	5	-	
Dibromobiphenyl	mg/kg		ND	5	-	
Tribromobiphenyl	mg/kg		ND	5	-	
Tetrabromobiphenyl	mg/kg		ND	5	-	
Hexabromobiphenyl	mg/kg		ND	5	-	
Pentabromobiphenyl	mg/kg		ND	5	-	
Heptabromobiphenyl	mg/kg		ND	5	-	
Octabromobiphenyl	mg/kg		ND	5	-	
Nonabromobiphenyl	mg/kg		ND	5	-	
Decabromobiphenyl	mg/kg		ND	5	-	
<b>Sum of PBDEs</b>	mg/kg		With reference to IEC 62321-6:2015 (Determination of PBDE by GC-MS)	ND	-	1000
Monobromodiphenyl ether	mg/kg			ND	5	-
Dibromodiphenyl ether	mg/kg	ND		5	-	
Tribromodiphenyl ether	mg/kg	ND		5	-	
Tetrabromodiphenyl ether	mg/kg	ND		5	-	
Pentabromodiphenyl ether	mg/kg	ND		5	-	
Hexabromodiphenyl ether	mg/kg	ND		5	-	
Heptabromodiphenyl ether	mg/kg	ND		5	-	
Octabromodiphenyl ether	mg/kg	ND		5	-	
Nonabromodiphenyl ether	mg/kg	ND		5	-	
Decabromodiphenyl ether	mg/kg	ND	5	-		

This document is issued by the Company subject to its General Conditions of Service printed overleaf, available on request or accessible at <http://www.sgs.com/en/Terms-and-Conditions.aspx> and, for electronic format documents, subject to Terms and Conditions for Electronic Documents at <http://www.sgs.com/en/Terms-and-Conditions/Terms-e-Documents.aspx>.

Attention is drawn to the limitations of liability, indemnification and jurisdiction issues defined therein. Any holder of this document is advised that information contained hereon reflects the Company's findings at the time of its intervention only and within the limits of Client's instructions, if any. The Company's sole responsibility is to its Client and this document does not exonerate parties to a transaction from exercising all their rights and obligations under the transaction documents. This document cannot be reproduced except in full, without prior written approval of the Company. Any unauthorized alteration, forgery or falsification of the content or appearance of this document is unlawful and offenders may be prosecuted to the fullest extent of the law.

Unless otherwise stated the results shown in this test report refer only to the sample(s) tested and such sample(s) are retained for 90 days only.

Test Item(s):	Unit	Test Method	Results	RL	Limit
			1		
Bis (2-ethylhexyl) phthalate (DEHP)	mg/kg	With reference to IEC 62321-8:2017 (Determination of DEHP by GC-MS)	ND	50	1000
Butyl benzyl phthalate (BBP)	mg/kg	With reference to IEC 62321-8:2017 (Determination of BBP by GC-MS)	ND	50	1000
Dibutyl phthalate (DBP)	mg/kg	With reference to IEC 62321-8:2017 (Determination of DBP by GC-MS)	ND	50	1000
Diisobutyl phthalate (DIBP)	mg/kg	With reference to IEC 62321-8:2017 (Determination of DIBP by GC-MS)	ND	50	1000

**Note:**

1. mg/kg = ppm; 0.1wt% = 1000ppm
2. RL = Reporting Limit
3. ND = Not detected
4. - = not regulated
5. The maximum permissible limit is quoted from RoHS Directive (EU) 2015/863.
6. IEC 62321 series is equivalent to EN 62321 series  
[http://www.cenelec.eu/dyn/www/f?p=104:110:721668440899381:::FSP\\_PROJECT,FSP\\_LANG\\_ID:20662,25](http://www.cenelec.eu/dyn/www/f?p=104:110:721668440899381:::FSP_PROJECT,FSP_LANG_ID:20662,25)
7. The above test(s) was / were accredited ISO 17025:2017 by VILAS  
 The above test(s) was / were performed by SGS VN's Chemical lab.

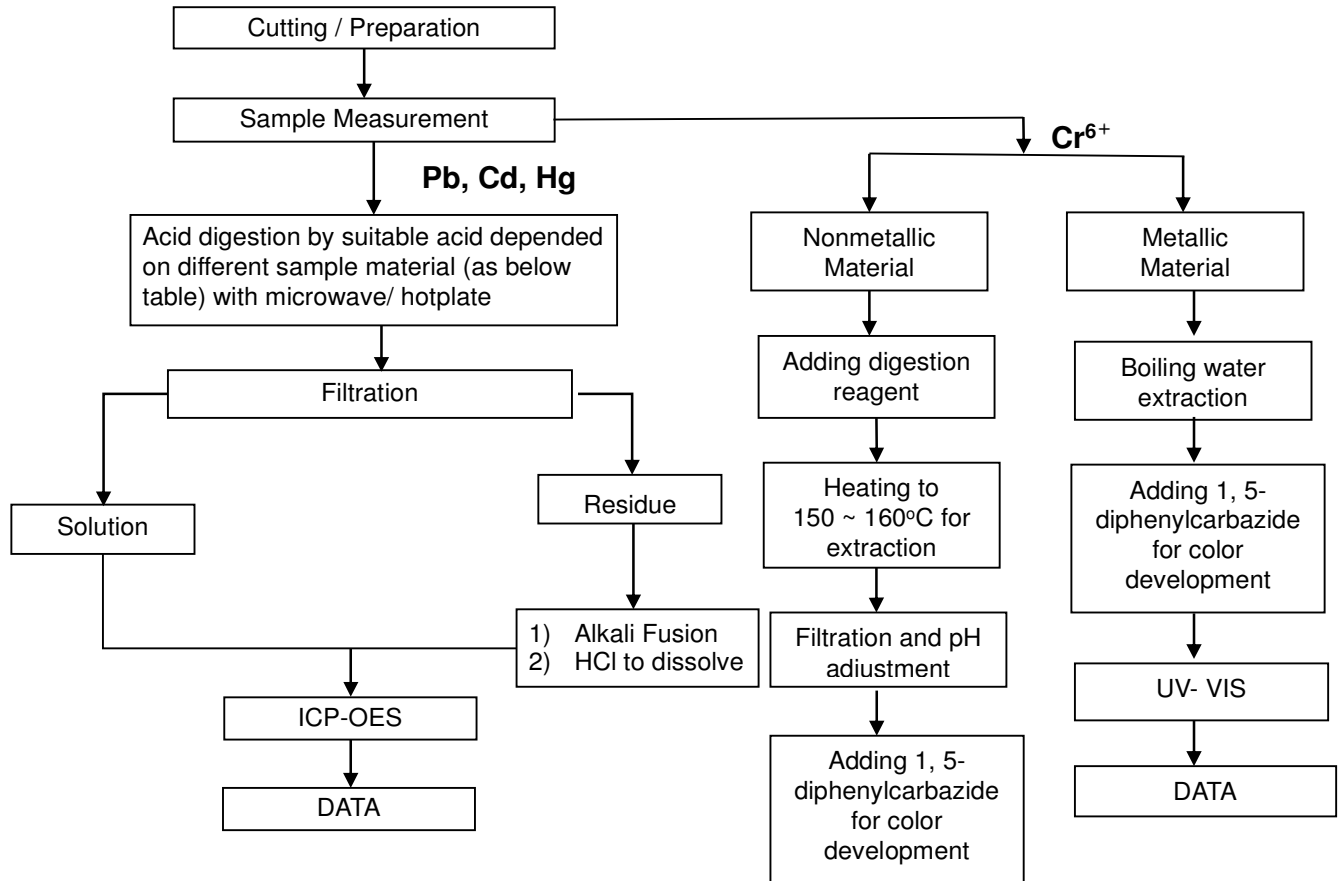
This document is issued by the Company subject to its General Conditions of Service printed overleaf, available on request or accessible at <http://www.sgs.com/en/Terms-and-Conditions.aspx> and, for electronic format documents, subject to Terms and Conditions for Electronic Documents at <http://www.sgs.com/en/Terms-and-Conditions/Terms-e-Document.aspx>.

Attention is drawn to the limitations of liability, indemnification and jurisdiction issues defined therein. Any holder of this document is advised that information contained hereon reflects the Company's findings at the time of its intervention only and within the limits of Client's instructions, if any. The Company's sole responsibility is to its Client and this document does not exonerate parties to a transaction from exercising all their rights and obligations under the transaction documents. This document cannot be reproduced except in full, without prior written approval of the Company. Any unauthorized alteration, forgery or falsification of the content or appearance of this document is unlawful and offenders may be prosecuted to the fullest extent of the law.

Unless otherwise stated the results shown in this test report refer only to the sample(s) tested and such sample(s) are retained for 90 days only.

**Flow Chart for RoHS: Pb/Cd/Hg/Cr<sup>6+</sup> Testing**

These samples were dissolved totally by pre-conditioning method according to below flow chart. (Cr<sup>6+</sup> test method excluded)



Sample Material	Digestion Acid
Steel, copper, aluminum, solder	Aqua regia, HNO <sub>3</sub> , HCl, HF, H <sub>2</sub> O <sub>2</sub>
Glass	HNO <sub>3</sub> /HF
Gold, platinum, palladium, ceramic	Aqua regia
Silver	HNO <sub>3</sub>
Plastic	H <sub>2</sub> SO <sub>4</sub> , H <sub>2</sub> O <sub>2</sub> , HNO <sub>3</sub> , HCl
Others	Any acid to total digestion

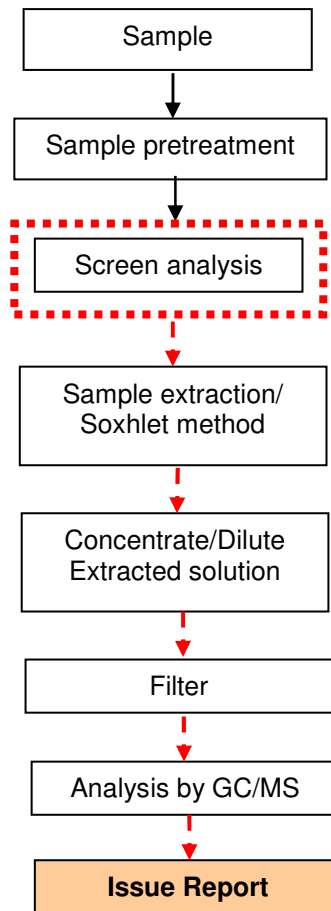
This document is issued by the Company subject to its General Conditions of Service printed overleaf, available on request or accessible at <http://www.sgs.com/en/Terms-and-Conditions.aspx> and, for electronic format documents, subject to Terms and Conditions for Electronic Documents at <http://www.sgs.com/en/Terms-and-Conditions/Terms-e-Document.aspx>.

Attention is drawn to the limitations of liability, indemnification and jurisdiction issues defined therein. Any holder of this document is advised that information contained herein reflects the Company's findings at the time of its intervention only and within the limits of Client's instructions, if any. The Company's sole responsibility is to its Client and this document does not exonerate parties to a transaction from exercising all their rights and obligations under the transaction documents. This document cannot be reproduced except in full, without prior written approval of the Company. Any unauthorized alteration, forgery or falsification of the content or appearance of this document is unlawful and offenders may be prosecuted to the fullest extent of the law.

Unless otherwise stated the results shown in this test report refer only to the sample(s) tested and such sample(s) are retained for 90 days only.

**Flow chart of PBB/PBDE Testing**

First testing process →  
 Optional screen process .....  
 Confirmation process -▶

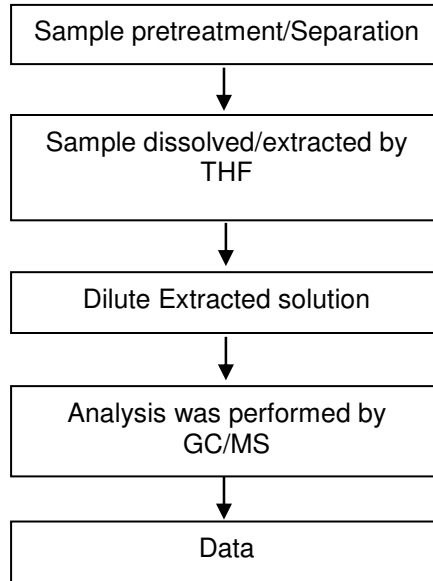


This document is issued by the Company subject to its General Conditions of Service printed overleaf, available on request or accessible at <http://www.sgs.com/en/Terms-and-Conditions.aspx> and, for electronic format documents, subject to Terms and Conditions for Electronic Documents at <http://www.sgs.com/en/Terms-and-Conditions/Terms-e-Document.aspx>.

Attention is drawn to the limitations of liability, indemnification and jurisdiction issues defined therein. Any holder of this document is advised that information contained herein reflects the Company's findings at the time of its intervention only and within the limits of Client's instructions, if any. The Company's sole responsibility is to its Client and this document does not exonerate parties to a transaction from exercising all their rights and obligations under the transaction documents. This document cannot be reproduced except in full, without prior written approval of the Company. Any unauthorized alteration, forgery or falsification of the content or appearance of this document is unlawful and offenders may be prosecuted to the fullest extent of the law.

Unless otherwise stated the results shown in this test report refer only to the sample(s) tested and such sample(s) are retained for 90 days only.

### Flow chart of Phthalate Testing

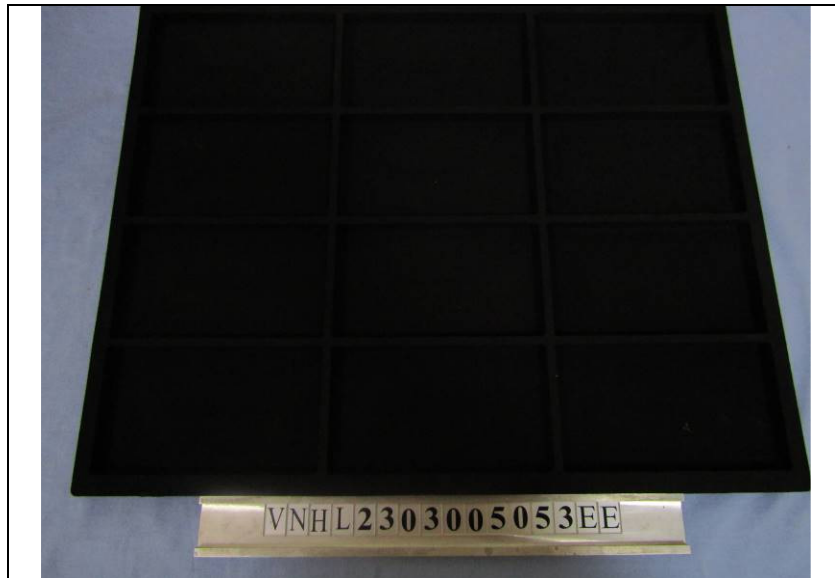


This document is issued by the Company subject to its General Conditions of Service printed overleaf, available on request or accessible at <http://www.sgs.com/en/Terms-and-Conditions.aspx> and, for electronic format documents, subject to Terms and Conditions for Electronic Documents at <http://www.sgs.com/en/Terms-and-Conditions/Terms-e-Document.aspx>.

Attention is drawn to the limitations of liability, indemnification and jurisdiction issues defined therein. Any holder of this document is advised that information contained hereon reflects the Company's findings at the time of its intervention only and within the limits of Client's instructions, if any. The Company's sole responsibility is to its Client and this document does not exonerate parties to a transaction from exercising all their rights and obligations under the transaction documents. This document cannot be reproduced except in full, without prior written approval of the Company. Any unauthorized alteration, forgery or falsification of the content or appearance of this document is unlawful and offenders may be prosecuted to the fullest extent of the law.

Unless otherwise stated the results shown in this test report refer only to the sample(s) tested and such sample(s) are retained for 90 days only.

PHOTO OF SUBMITTED SAMPLE FOR TESTING



REPORT RESULTS REFER TO SUBMITTED SAMPLE (S) ONLY  
\*\*\*End of Report\*\*\*

*This document is issued by the Company subject to its General Conditions of Service printed overleaf, available on request or accessible at <http://www.sgs.com/en/Terms-and-Conditions.aspx> and, for electronic format documents, subject to Terms and Conditions for Electronic Documents at <http://www.sgs.com/en/Terms-and-Conditions/Terms-e-Document.aspx>.*

*Attention is drawn to the limitations of liability, indemnification and jurisdiction issues defined therein. Any holder of this document is advised that information contained hereon reflects the Company's findings at the time of its intervention only and within the limits of Client's instructions, if any. The Company's sole responsibility is to its Client and this document does not exonerate parties to a transaction from exercising all their rights and obligations under the transaction documents. This document cannot be reproduced except in full, without prior written approval of the Company. Any unauthorized alteration, forgery or falsification of the content or appearance of this document is unlawful and offenders may be prosecuted to the fullest extent of the law.*

*Unless otherwise stated the results shown in this test report refer only to the sample(s) tested and such sample(s) are retained for 90 days only.*